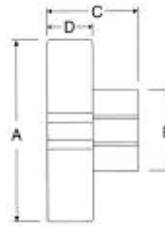


Plastic Hand Knobs

- ▶ Black phenolic knob with brass insert
- ▶ Tapped through hole
- ▶ Four prong design

PART #	A	B	C	D	Tapped Hole
HK-1250	1-1/4	5/8	7/8	1/2	1/4-20
HK-1251	1-1/4	5/8	7/8	1/2	5/16-18
HK-1751	1-3/4	13/16	1"	1/2	5/16-18
HK-1752	1-3/4	13/16	1"	1/2	3/8-16
HK-2252	2-1/4	1"	1-1/8	9/16	3/8-16
HK-2253	2-1/4	1"	1-1/8	9/16	1/2-13

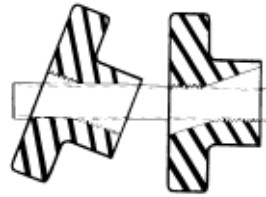
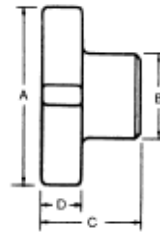


Quick-Change Knobs

- ▶ Easy to use...slide knob along length of stud and tilt the handle to engage the threads
- ▶ Steel knob, black oxide finish
- ▶ A great time saver!
- ▶ Four prong design

PART #	Thread Size	INCH			
		A	B	C	D
QK-10	1/4-20	1-1/8	9/16	5/8	5/16
QK-11	5/16-18	1-1/2	11/16	7/8	3/8
QK-12	3/8-16	2"	13/16	1"	1/2
QK-13	1/2-13	2-1/2	1"	1-1/8	9/16
QK-14	5/8-11	3"	1-1/4	1-1/4	5/8
QK-15	3/4-10	3"	1-1/4	1-1/4	5/8

PART #	Thread Size	METRIC			
		A	B	C	D
QK-20	M6 x 1.0	30mm	14mm	16mm	8mm
QK-21	M8 x 1.25	38	17	22	10
QK-22	M10 x 1.5	50	21	25	13
QK-23	M12 x 1.75	64	25	30	14
QK-24	M16 x 2.0	76	32	32	16



Metric Quick-Change Knobs

- ▶ Black thermoplastic knob
- ▶ Steel bushing with zinc-plated finish
- ▶ Easy to use...slide knob along length of stud and tilt the handle to engage the threads.
- ▶ A great time saver!

PART #	X Thread	D	B	C
254008	M8 x 1.25	40mm	26mm	13mm
255010	M10 x 1.5	50	34	17
256312	M12 x 1.75	63	42	21

